



Burren Junction PS Newsletter

Term 2 Week 3

Thursday 12th May 2022

'Look, Listen and Think'

From the Principal

As I write this newsletter the rains have certainly set in, and our numbers are well down. Our teachers have worked hard to make sure those who may have been impacted have work to go on with from home.

I had the most fabulous week last week with 14 delightful students in Sydney. I will let you read all about it from the students, but I just wanted to thank Helen, Ellie and Keiran who joined Alison and I for the adventure. The positive feedback from strangers about their behaviour was regular and deserved. These students had not had excursions in the past few years so for half of them it was their first one. We cannot thank Ms Galvin enough for the 5-star accommodation which she generously donated. I spoke to my older children on our return about how lucky Burren kids are to climb the bridge and not stay on plastic mattresses in bunk beds. They assured me when they hit high school and have a school camp when you eat tin sausages and powdered potato and sleep in a leaking tent you absolutely realise how lucky you are to have attended excursions at BJPS. A massive thank you to the P&C for providing the bridge climb. It is a once in a lifetime experience.

NAPLAN

Year 5 Naplan started on Tuesday and will resume next Monday (weather permitting) to allow for students to return. Year 3 have been able to continue as planned and most are finished. We were given a 10 day test window to accommodate for Covid, so have used this to accommodate for wet weather.

CROSS COUNTRY

As you would have received notification Narrabri West have postponed the Cross-Country carnival due to the



large amount of rain and awareness that many families would be unable to attend. They contacted each school to check availabilities and the date that all could work with was Friday June 3rd. That is Eisteddfod week, however no school has anything on that date. It will give us all some more time to train

EISTEDDFOD COSTUMES

In preparation for the 2-6 dance Mrs Deacon has advised that each child will need to wear a pair of jeans and a plain white shirt with black shoes. We have ordered each child a shirt from Kmart so they just need to have any shade of blue jeans.

K-1 will wear full winter uniform (ties for boys and stockings for girls) for their poetry performance.

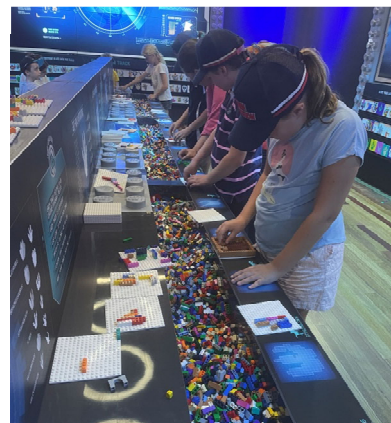
We will be sending a note asking closer to the date for parents who need assistance in getting children to Narrabri. We are aware that it is hard this far out for parents to commit.

RURAL ACCESS GAP PROGRAM

Thursday Mrs Deacon and I worked with two staff from the Rural Access Gap Program. This program provides technology support and infrastructure to rural and remote schools. This program provided our school with 5 new interactive smartboards in addition to laptops and iPads last year. We will soon begin a 12 month program of support.

Kate Slack-Smith—principal

SYDNEY EXCURSION MONDAY 2ND MAY TO FRIDAY 6TH MAY—4/5/6



SYDNEY EXCURSION MONDAY 2ND MAY TO FRIDAY 6TH MAY—4/5/6

Luxury Escapes

Uncomfortable beds, cramped conditions, shared bathroom, bunks, no view, no AC and no lounging area. This was not the case for Burren Junction 5/6 in Sydney – we had total luxury. The Sebel Pinnacle Apartments in Darling Harbour was our magnificent home base during our week in Sydney. Three amazing apartments all with outstanding city views. Comfortable beds, couches, hot showers, television, air conditioners and fantastic housekeeping (Helen). We even had a rooftop reservation to eat dinner, play putt putt and watch the city lights. It was close to all of Sydney's famous icons and we could not have been happier with our accommodation. Miss Bouveng continually reminded us that it was not the type of accommodation children normally experience when on a primary camp. A huge thank you to Ms Galvin for organising our luxury escape. Your generosity was very much appreciated by students, parents and teachers. 5/6 give the Sebel 5 *****.

By 5/6

Make or Break

The 5/6 class went to the Australian Museum while in Sydney and it was astonishing. There were humongous dinosaurs, bold birds, unique Aboriginal history and fascinating animals. Our favourite activity was the Brickman exhibition. Click, Clack, Smash. The theme was Jurassic Park and it was super fun. You were allowed to make dinosaur footprints, cars to clear jumps and we each got a tile with prints on it that you would put bricks on and all the tiles together would make a dinosaur. It was amazing. After we left the exhibition, we had a better look at the museum. It was fantastic. At the end, all of us had a look at the gift shop and a couple of people got some souvenirs. It was a great experience.

By Harper Ferris (Lego Master)

Transport NSW

While we were in Sydney we used every mode of transport. It started when we left Narrabri on a train which took 8 hours for us to reach Central Station. Once we arrived in Sydney, we began walking which was our most common mode of transport. Most students whinged about walking but soon realised it was the best way to see everything. Another type of transport we went on was the Manly Ferry. While we were on the ferry, we saw jellyfish. It took 20 minutes to reach Manly by ferry. Next, we caught the light rail up George Street. The light rail was packed with people. We were on it for between 5 to 10 minutes. On Friday we caught the train home. While I was on the train, I saw a CAT 323 Next Gen Excavator, trucks, cars and bikes.

By Aaron Lane (Transport Minister)

For The Love of Food

Blue fish, Fish and Chips, Tower Eye, Ribs and Burgers, Fratelli Fresh and The Australian Hotel. How lucky were 5/6 who got to enjoy all these delicious restaurants while we were away in Sydney. Our all-time favourite was The Tower Eye which is 309m high, it takes an hour and twenty minutes to rotate and was built in 1970. At the Tower Eye everyone tried something new including mocktails, oysters, prawns and special desserts. Frank Pike managed to squeeze in 7-9 mini meringues. Everyone enjoyed the buffet and came back to the table with mountains of food on their plates and then left for seconds. Overall, everybody loved the mouth-watering food that we ate on the Sydney Excursion.

By Bec (MasterChef Judge)

Setting Sail

We stepped inside the sails and discovered the magic at the heart of this famous Sydney icon. Yes, we were lucky enough to visit the Sydney Opera House designed by Jorn Utzon of Denmark. Jorn's inspiration for the Opera House design came from his childhood which was spent mostly by the water. While we were there, we watched a rehearsal for the latest contemporary ballet. Also, as we were travelling up to the second floor in the elevator, we noticed it had no roof and it was lifting from below. Our tour guide explained that it was because legally they were not allowed to change the original design. The Opera House is built on Bennelong Point and on the side steps there is a beautiful fur seal living there and they named him Benny.

By Harry Powell (Member of the Visitor Experience Committee) and Year 6

Perfect Paddling

While we were in Sydney, we were lucky enough to try stand up paddle boarding in Manly. It was a perfect day on the water and we couldn't wait to jump onto our blue and white boards. Craig, our instructor, gave us a quick lesson on how to stay on and what to do and what not to do. Splish! Splosh! Splash! Our hearts were beating out of our chests as we glided into the water. Some people found it hard to get up but some didn't. Will was the first up and Tilly was the first to fall in the cold water. 5/6 had a blast racing each other, pushing each other in and switching boards. Even Kitty tried to beat the Manly Ferry to Circular Quay and only had to use the rescue boat twice. At the end of our lesson everyone had fallen in, even Helen who had been pushed in by her son Will. Sadly, our outstanding lesson came to an end. We all had an amazing time on the gorgeous waters of Manly's North Harbour.

By Sophie Slack-Smith (SUP Deck Hand)

On Top of the World

Up, up we went to the summit, overlooking the harbour below. Our baggy jumpsuits catching the wind hauling ourselves to the top. The climb never ended. No doubt about it, we were on the Sydney Harbour Bridge. This iconic bridge with an estimated 6 million rivets took 8 years to construct, 1400 workers and is the world's largest steel arch bridge. The views were spectacular. The harbour, Kirribilli, (apparently a rich person's suburb) Cockatoo Island, the glamorous Opera House and the city of Sydney. Once we reached the summit, we saw the 5x10 metre Australian and New South Wales flags that every 3 months the government spends \$60 000 to replace both the flags. It was amazing to hear that only 16 people died during the building phase considering there was no safety equipment. Also, only 2 people fell, one of them survived however, the other didn't. The total number of steps walked by bridge climbers over the past 21 years is equivalent to 7,200,000km - the same as walking from one side of Australia and back 33 times. I counted the steps and there were 1253 stairs just to the summit and back. We have now ticked 2 things off our bucket list, and we haven't even left primary school yet. A huge thanks to the P&C for letting us climb the bridge as we couldn't have done it without you. We loved it.

By William Smith (Climb Operations Manager)

Surf's Up

When we were in Sydney, we went to Manly Beach. We went swimming in the surf. It was all good fun until poor Harry Lane (me) got hit by a man catching a wave back to shore. Luckily the man was not on a surfboard or boogie board, he was body surfing otherwise the next stop would have been Manly Hospital. It was a perfect day for being at the beach. The weather was beautiful, the water was shining and the sand was golden. We all loved it.

By Harry Lane (Bondi Rescue extra)

Term 2 Week 3



Upcoming Dates



Term 2

13 May	Online Applications CLOSES
	Opportunity Year 5 placement 2023
TBA	Zone Rugby trials
17th May	Zone Netball trials
23rd May	North West Rugby
26th May	North West Netball
27th May	Eisteddfod Dance
31st May	Eisteddfod Speech (K/1/2)
1st June	Eisteddfod Speech (3/4)
2nd June	Eisteddfod Speech (5/6)
3 June	Zone Cross Country (Narrabri)
10th June	School Sports Carnival
15th June	Narrabri Science Challenge (5/6)
17th June	North West Cross Country
TBA	Zone Softball trials
21 June	Netball Cup Narrabri (3-6)
23 June	6 Ways Carnival at Pilliga
27th June	North West Girls Softball
28th June	North West Boys Softball
30th June	6 Ways backup

Term 3

20 July	North West Cricket trials Girls
27 July	School Photos (Date Change)
28 July	2022 Opportunity Class Placement Test Year 5 placement for 2023
22 Aug to	
24 Aug	Lake Keepit Excursion
Sunday August 21 to	
Friday 26th August	Canberra Excursion

Tuckshop Term 2 Update Roster.

TERM 2			Year 6 Cupcake
Week 1	April 29 th	Helen	Will
Week 2	May 6 th	Rachel Janine	*Yr 5/6 Sydney Excursion
Week 3	May 13 th	Laura ?	Ella
Week 4	May 20 th	Ellie Helen	Sophie
Week 5	May 27 th	Janine? Keiran?	*Eisteddfod Dance Yr 2-6
Week 6	June 3 rd	Suzie - ?	Aaron
Week 7	June 10 th	Jess ?	Bridie
Week 8	June 17 th	Em ?	Harper
Week 9	June 24 th	Sonia Alice	Ella
Week 10	July 1 st	Ange Prue	Bec

We also need volunteers for the highlighted dates, If you are able to assist please let Em Howie know – 04129620140
Thank you

Morning Tea

A selection of items will be available to purchase for morning tea such as but not limited to:

Seasonal Fruit - Frozen Yoghurt - Mamee Monster Noodles - Popcorn - Party Pie - Mini Sausage Roll - Mini Hotdogs - Jelly cup - Muffins - Cake - Slices

These range from 50c - \$3.00

Drinks

Available to purchase at Morning Tea and Lunch

Water Bottled	\$1.00
Poppers	\$1.50

Ice Poles

Available for purchase after Middle Lunch Bell

Lemonade	\$1.00
Chocolate	\$1.50

Lunch

Lunch Order & Childs name to be written on a paper bag with money and Placed in the lunch basket before class.

(Drinks, Ice poles & Morning Tea to be purchased separately)

Chicken Tenders	\$1.20 ea
Sausage Roll	\$3.00
Pie	\$4.00
Pizza (ham & pineapple or cheese & bacon)	\$2.50
Wedges (with Sour Cream & Sweet Chilli Sauce)	\$2.50
Mac & Cheese	\$3.00
Chicken Nuggets Tempura-(3)	\$2.00
Cup Noodles (Chicken or Beef)	\$2.00
Wrap - Chicken tenders & salad	\$5.00

KEEP AN EYE OUT FOR WEEKLY SPECIALS.

School Check In

Parents and the community please note you need to register with the School online login system. (QR Code)

- If you enter the school grounds to attend sport, or extra-curricular activity.
- If you are taking your children early, sport or sick.
- If you drop your children off late

It is instead of the paper sign in we used to have prior to Covid. It is used for evacuations and keeping up to date with who is on the school premises it is required for WHS.

Contact Us

(Tel) 02 6796 1464 (Fax) 02 6796 1458

Email: burrenjunc-p.school@det.nsw.edu.au

<http://www.burrenjunc-p.schools.nsw.edu.au>

Office Hours: Monday to Friday 8.45 am to 3.30pm



Education